





Bloor W. & Dundas W.

1540-1550 Bloor St W, Toronto, ON

Coming soon to one of downtown Toronto's best-connected corners, this future development will feature the addition of 7,100 SF of prime retail space at grade, and 354 residential units. This redevelopment will transform an existing Toronto building into an iconic revitalized mixed-use destination. A rare retail opportunity to join the reinvigoration of a noteworthy cross-section in an already established neighbourhood of Toronto.

Located directly adjacent to the Dundas West subway station and steps from the Bloor GO and Union Pearson Express (UP) station, Bloor & Dundas will be a hub for residents, commuters, and workers alike. The area becomes even more enticing with close proximity to the bustling retail nodes of Bloor West Village, Roncesvalles, and the Junction that surround this corner. Just around the corner you can find High Park, Toronto's largest public park that provides a tranquil reprieve when needed.

Demographics	1 km	3 km	5 km
Total Population	35,364	240,390	546,197
Number of Households	16,665	106,399	252,174
Average Household Income	\$109,924	\$113,962	\$127,213
Median Age	37.5	37.9	37.5

Bloor W. & Dundas W.

1540-1550 Bloor St W, Toronto, ON

Location

Northwest corner of Bloor Street West
& Dundas Street West, adjacent to the
Dundas West subway station and the Union
Pearson Express (UP) and GO station

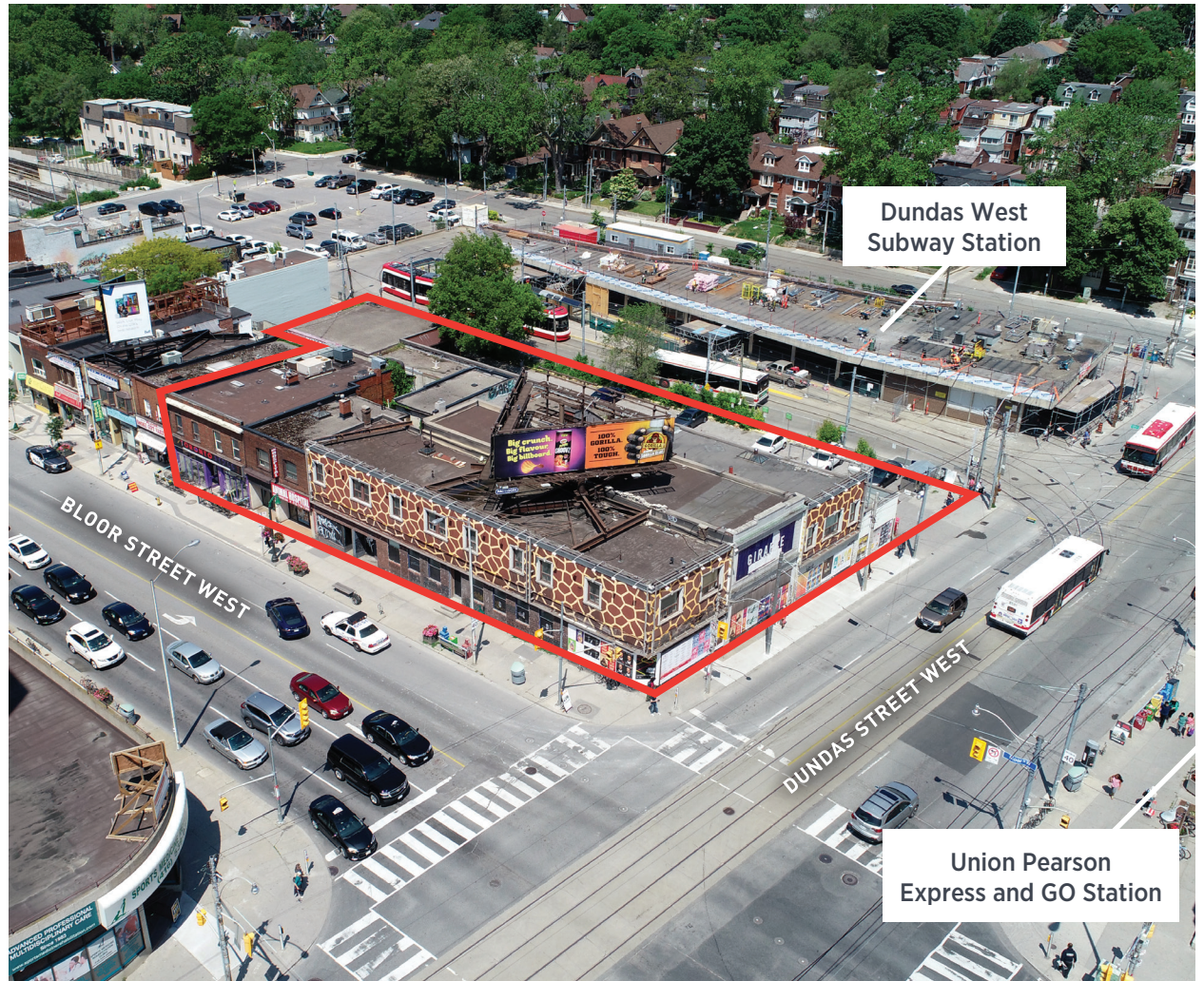
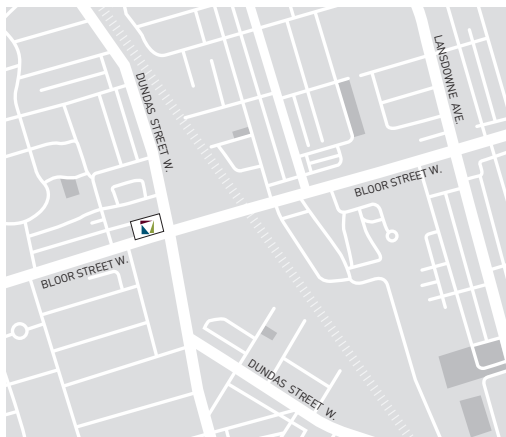
Size

Future Retail	7,100 s.f.
Residential (354 units)	251,800 s.f.
Total GFA	258,900 s.f.

Underground Parking

Redevelopment Retail Possession

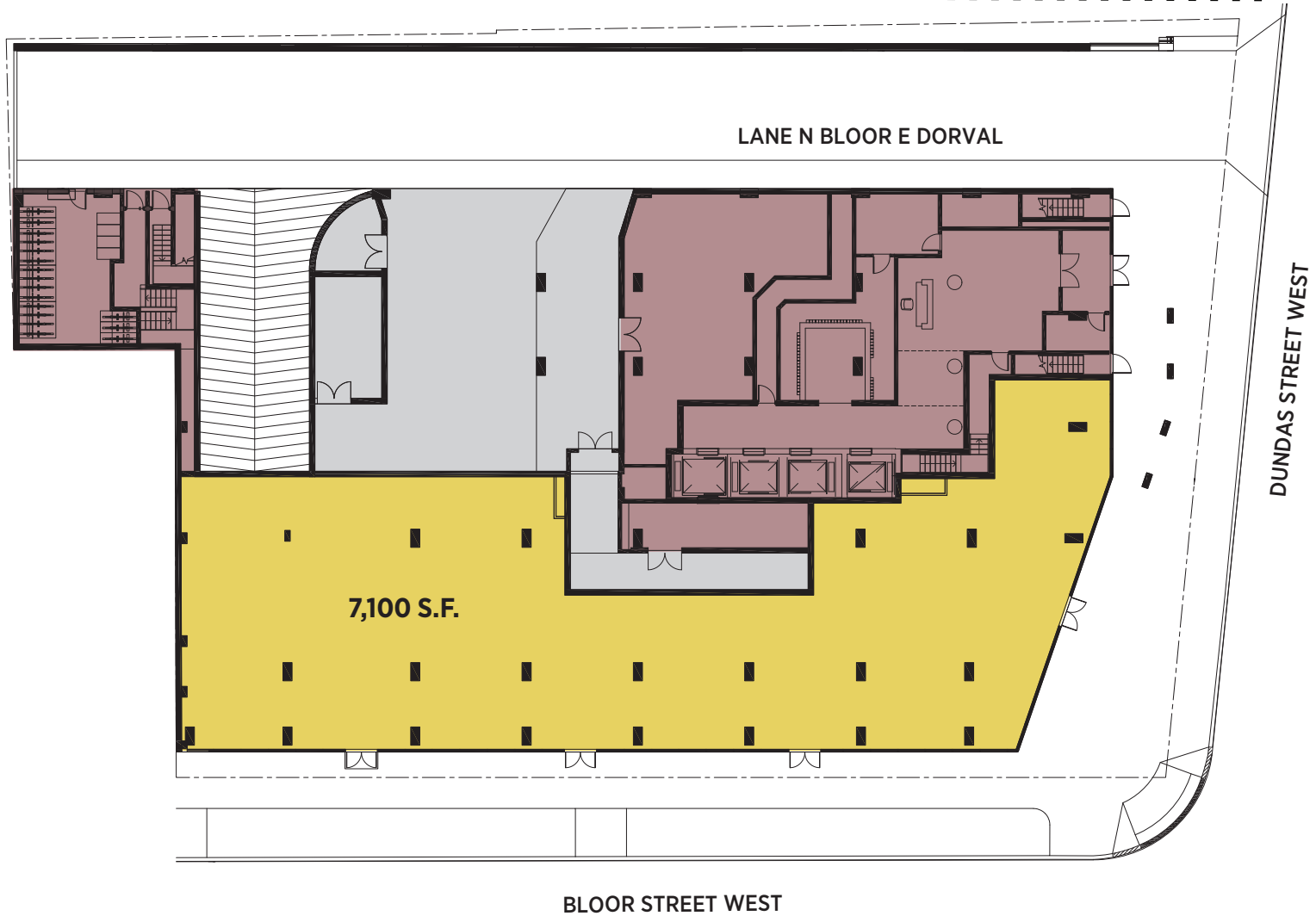
Q4 2027



DUNDAS WEST SUBWAY STATION



LANE N BLOOR E DORVAL



FUTURE REDEVELOPMENT - GROUND LEVEL

 Retail Leased  Retail Available  Residential

TRINITY - THE PLACE TO BE | trinity-group.com